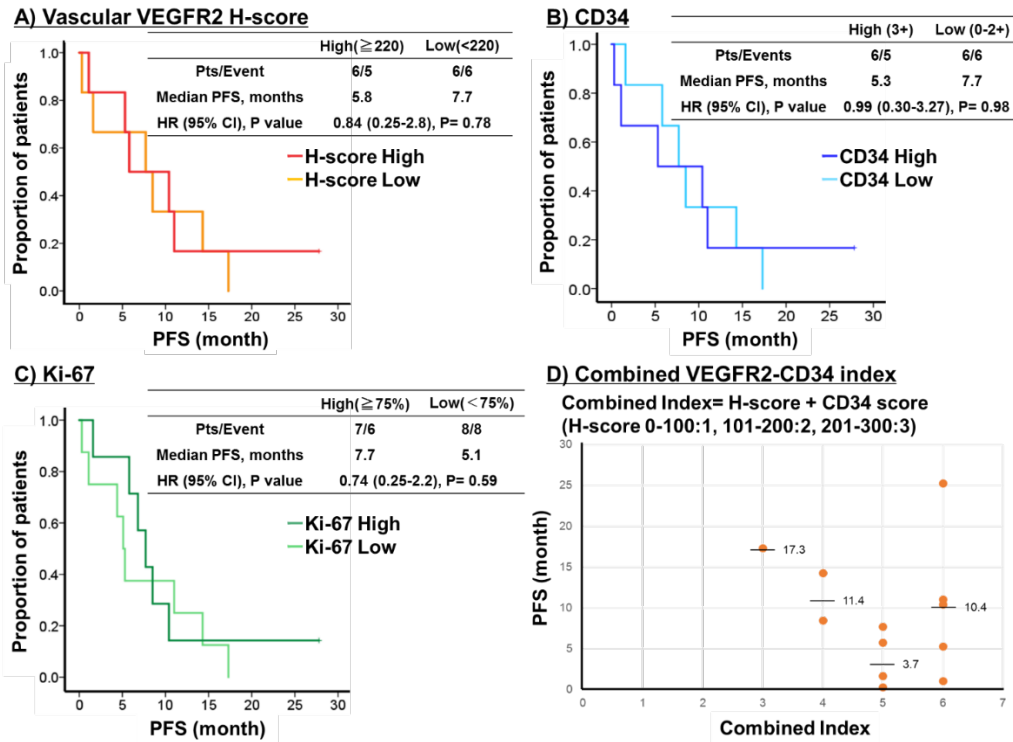


Figure S6



Progression-free survival by vascular VEGFR2 H-score, CD34, and Ki-67 index in G-NEC. Kaplan–Meier curves are shown for PFS. A) PFS by high and low vascular VEGFR2 H-score. B) PFS by high and low CD34 expression. C) PFS by high and low Ki-67 index. D) PFS plots by combined VEGFR2-CD34 index.